

RJ.  
Phillpotts

---

Portfolio

# Rory John Phillpotts

**Telephone:** 07446 836957  
**Email:** rory.jp@btinternet.com

I am a creative individual who enjoys the challenge of new projects, particularly in my specialist area of product and furniture design. I am a tenacious, industrious and flexible team player with excellent communication skills, both verbal and visual. My work ethos dictates that all projects are completed to the highest standard with my energetic nature and proactive timekeeping ensuring deadlines are met. My enthusiasm for responding to new project briefs stems from my motivated approach and enjoyment of seeing a task through from start to finish.

#### EDUCATION:

**Current**  
University of Hertfordshire 2-year  
Foundation Degree in 3D Design  
(Ware Campus)  
**Prior**  
Goffs Secondary School, Goffs Lane,  
Cheshunt, Herts

#### QUALIFICATIONS:

**A2 and equivalent**  
Product Design (grade D)  
Photography (grade C)  
Business Studies 2-year course (Merit)

**AS**  
Product Design (grade C)  
Photography (grade C)

**GCSE and equivalent**  
Mathematics (grade C)  
English Language (grade C)  
+8 additional grade C plus

**UK full driving licence**

#### WORK EXPERIENCE:

**September 2013 to date** – *Rough Living*, bespoke furniture designer and manufacturer specialising in ecologically sourced and reclaimed furniture. Following an industry placement I was offered a part time job manufacturing components, assembling finished products, client interaction, material sourcing and ideas sketching.

**March 2012 to date** – *Fishpools Ltd.* on-going 2 year contract as a part time Sales Assistant across the Lighting, Pictures and Mirrors department. Duties include: advising customers, cashier, order placement and stock replenishment.

**December 2011** – *Fishpools Ltd.* (3 month contract) as goods in operator. Duties included: site security & management, managing deliveries and customer collections and stock management.

**July 2011** – *Lambert Smith Hampton*, industry surveyors and premises letting (1 week placement). Duties included: Archiving, site visits and measuring, costing and client meetings.

**July 2010** – *DESTTECH*, Producer of bespoke electrical items and UK standards testers (1 week placement). Duties included: Component manufacture, answering the phone, product testing and using AutoCAD.

#### SKILLS

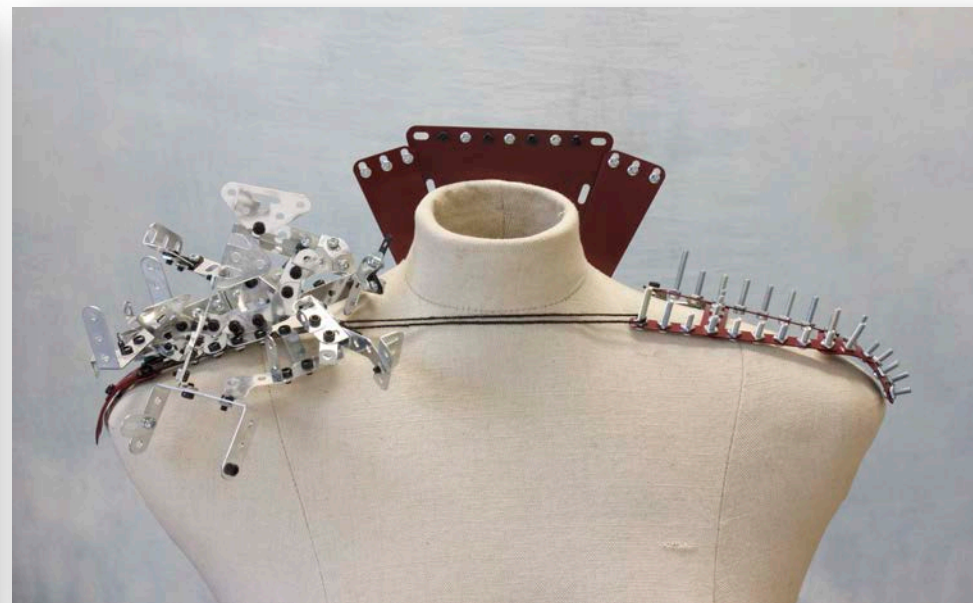
3D modelling	*****
Metal work	*****
Wood work	*****
Photography	*****
Technical drawing	*****
Free hand sketching	*****
Illustrator	****
Photoshop	****



I  
r  
o  
n

## Maiden

Iron Maiden, prototype catwalk jewellery piece using reclaimed materials. Inspired by Top Shop fashion trends and classic toys and games. This shoulder piece juxtaposes vibrant colour and industrial effect MECCANO to create a striking mock up.



Iron Maiden catwalk jewellery piece, inspired by Top Shop fashion trends and classic toys and games. Asymmetrical shoulder piece made from the iconic toy MECCANO developed in 1908.

**I  
r  
o  
n**

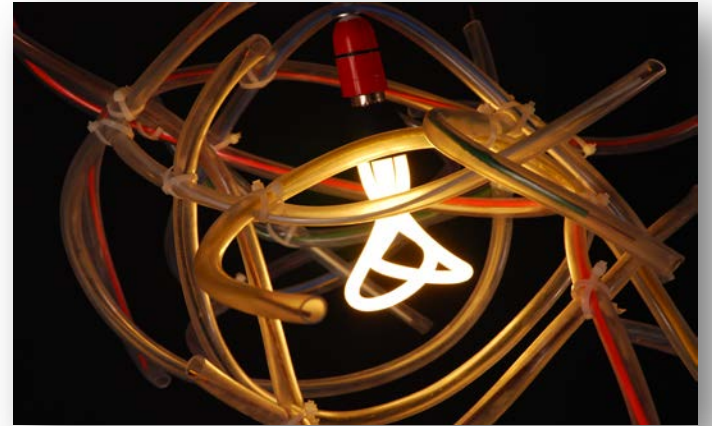
*Maiden*

NET

Tube Map Inspired Lighting

WORK

Conceptual lighting project inspired by the London Underground. Ten coloured rods housed inside plastic hose featuring a plumen bulb suspended from a red flex.





# CONNECT

Tube Map Inspired Lighting

Conceptual lighting project inspired by the London tube map. Made up of 6mm circular steel rod, bent and welded into position as an industrial style London tube map. The design features three quad loop filament bulbs projecting a shadow across an intended space.



# RE-THINK

## Furniture

Launching a new range of furniture working alongside bespoke designer and manufacturer, Rough Living, using reclaimed car parts.

---

Registration plate stool prototype, intended for use in bars and restaurants as well as domestic use in 'lads pads' and apartments. Simple steel frame with three legs, a circular footrest and a reclaimed registration plate back rest.







Coffee table manufactured using reclaimed brake disks supporting an 8mm smoked glass oval top. Made up of three sections bound together by a length of chain on assembly.



Four up-cycled Prince of Wales dining chairs forming part of the Anthropologie Display Project. Rubbed down and reupholstered to give a rustic aesthetic.



Display stand manufactured using an up-cycled dining set and steel frame base inspired by bespoke furniture designer and manufacture, Rough Living.



Display stand manufactured using an up-cycled dining set and steel frame base inspired by bespoke furniture designer and manufacture, Rough Living.





Two tier table and pallet wood box used to raise elements of the display to eye level and aid user interaction. Constructed using a Rough Living style steel frame and up cycled dining table.



